

GOLDEN
ARTIST COLORS®

WATERMEDIA PEAR ON ABSORBENT GROUND

ABSORBENT GROUND is a fluid acrylic medium that dries to a porous, paper-like surface. Applied over gessoed canvas, it facilitates raw canvas-like staining and watercolor effects. Lightfast, permanent and flexible.

Available in:



8 oz.
237 ml



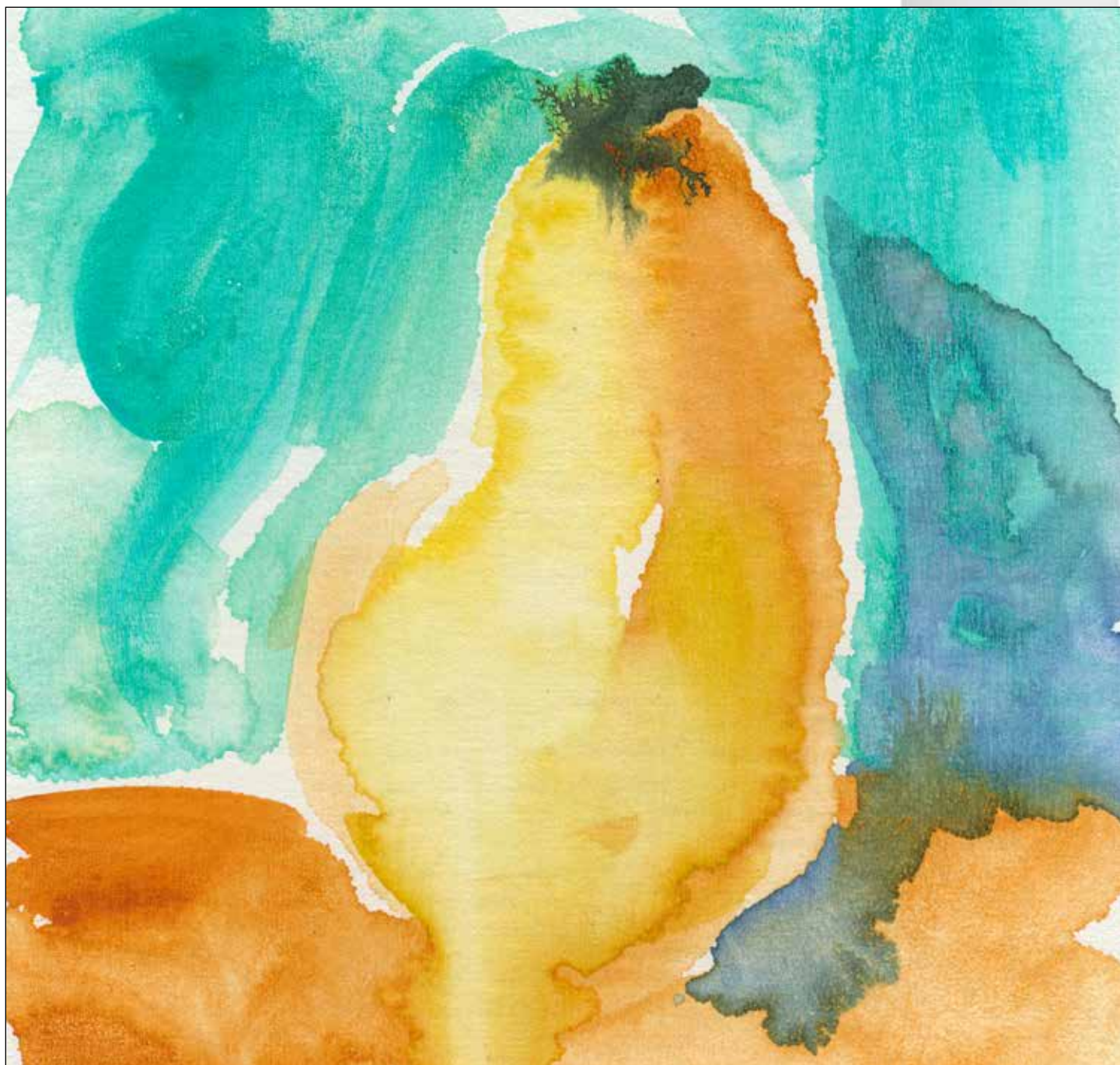
16 oz.
473 ml



32 oz.
946 ml



1 gal.
3.78 l



TOOLS / MATERIALS:

- Soft synthetic round
- Soft flat brush, 1 or 2 inch sponge brush, or small foam roller

GOLDEN PRODUCTS:

- GOLDEN Absorbent Ground (White)
- GOLDEN Fluid Teal
- GOLDEN Fluid Quinacridone/Nickel Azo Gold
- GOLDEN Fluid Hansa Yellow Light
- GOLDEN High Flow Indigo

STEP - BY - STEP:

STEP 1: Apply Absorbent Ground with any of the above tools. Using a brush will leave very distinct brushstrokes. This can be an interesting surface. If you want a more even surface, try the foam roller or the sponge brush. Let dry. Apply a second coat. Let dry.

STEP 2: The next step is designed to mimic watercolor washes, so you want all the paint to be transparent and thin. To achieve this, the Fluids will need to be mixed with water so that they are thin enough to flow and bleed onto the Absorbent Ground. Use your soft round brush, loaded with water and mix that into the Fluids. Dampen (don't flood) the surface of your Absorbent Ground with a clean brush loaded with clean water. This will help the paint bleed on the surface when you apply the washes. Use Fluid Quinacridone/Nickel Azo Gold for the pear. Mix a green with High Flow Indigo and Fluid Hansa Yellow Light for the leaf. High Flow is already the perfect viscosity (thinness) for a wash; although, with High Flow Indigo, you might want to mix it with water so that the color is not so strong or dark. Thinned Fluid Teal can be used for the background. High Flow Indigo can be used for the shadow and Fluid Quinacridone/Nickel Azo Gold can be used for the table. Because your surface is slightly wet, the colors might all bleed together. This is part of the beauty of working this way. It's ok to just let the paint flow. Don't try to make this perfect and keep within the lines.

