

■ Using GOLDEN Grounds, Pastes or Paints to create a surface for drawing materials is easy. You can create a wide variety of textures and colors with a lovely "tooth" that can be so much more exciting than a plain piece of white paper.



MATERIALS:

- Palette knife
- Stiff Cardboard, Illustration Board
- Graphite Pencils
- Color Pencils
- Pastels

GOLDEN PRODUCTS:

- Fluid Iridescent Micaceous Iron Oxide
- Fiber Paste
- Acrylic Ground for Pastels

OPTIONAL COLORS FOR TINTING:

- Fluid Interference Green (Fine)
- Heavy Body Terre Verte Hue
- Fluid Diarylide Yellow
- Fluid Pyrrole Orange

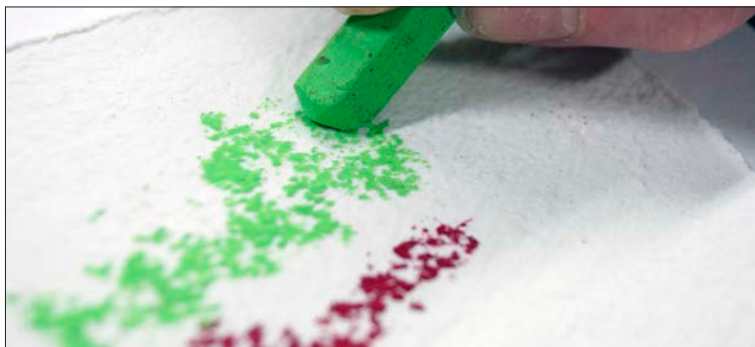
FLUID MICACEOUS IRON OXIDE:

Micaceous Iron Oxide is a GOLDEN Iridescent color made with larger particulate matter, giving the dried surface a tooth that is excellent for drawing. This example was created by combining two Fluid colors, Micaceous Iron Oxide and Interference Green (Fine). Add enough of the Fluid Interference Green (Fine) to the Fluid Micaceous Iron Oxide to create a rich, iridescent-flecked surface. Experiment with different proportions, about 1/3 Interference Green is a good place to start. If not adding the Interference Green, you will have a beautiful deep black surface with flecks of silver. Use a flat palette knife to spread the mixture. Allow the layer to dry completely before you begin drawing. Two pink (pale and dark) colored pencils were used for this drawing.

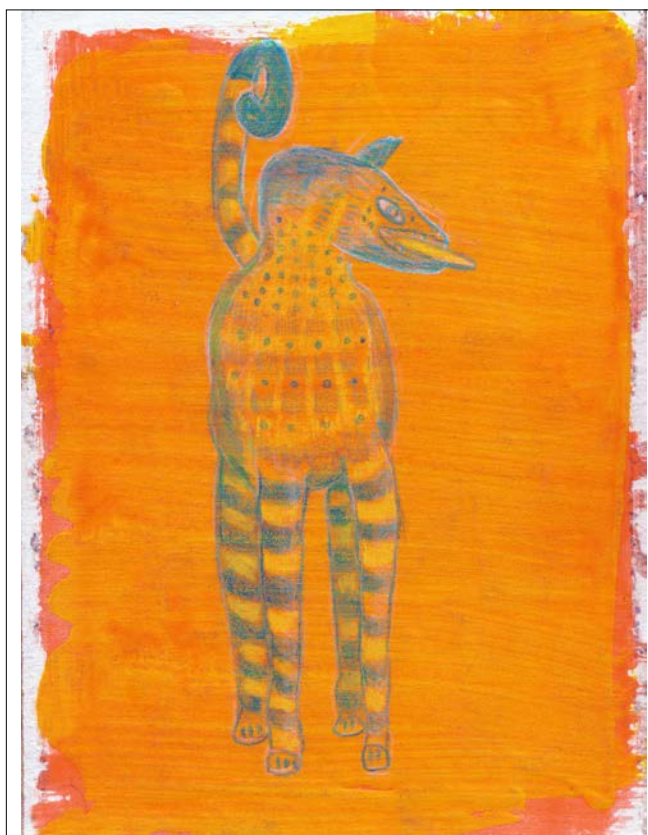


**FIBER PASTE:**

Using a palette knife, apply a layer Fiber Paste to sturdy cardboard or illustration board. When dry, the Fiber Paste imparts a rough, watercolor paper-like surface. For a tinted surface, apply a wash of color (this example is Heavy Body Terre Verte Hue thinned with water) and let that dry. The drawing was done with a water soluble graphite pencil, and then blended with a wet watercolor brush to give a wash effect in the shadow areas of the drawing.

**ACRYLIC GROUND FOR PASTELS:**

This application is done in two layers. Begin by painting a first layer of bright yellow; in this example we used Fluid Diarylide Yellow. Let dry. Next thin Acrylic Ground for Pastels with up to 40% water. Add a small amount of water, stir, allow mixture to settle a minute and then add more water until desired consistency. Tint this mixture with a few small drops of a bright orange, such as Fluid Pyrrole Orange. Apply this mixture over the yellow layer. Use a soft brush for application to minimize the brush strokes. Allow to dry. The resulting tooth is perfect for a variety of drawing tools, including pastels, as the name of the product suggests. This example uses a mixture of colored pencils for the drawing. Acrylic Ground for Pastels is very translucent when applied, so your first layers, painting or drawing, will be visible through the ground.



Visit the Fine Art Techniques section of the GOLDEN website for more ideas on using Acrylic Grounds for Drawing:
http://www.goldenpaints.com/artist/drawing_dogs/index.php